

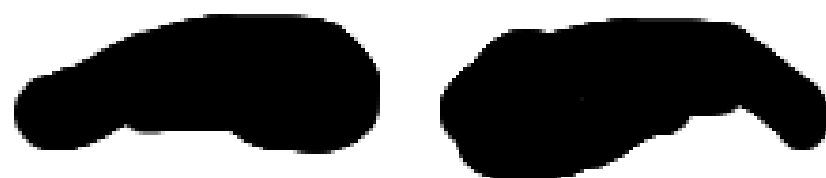


control

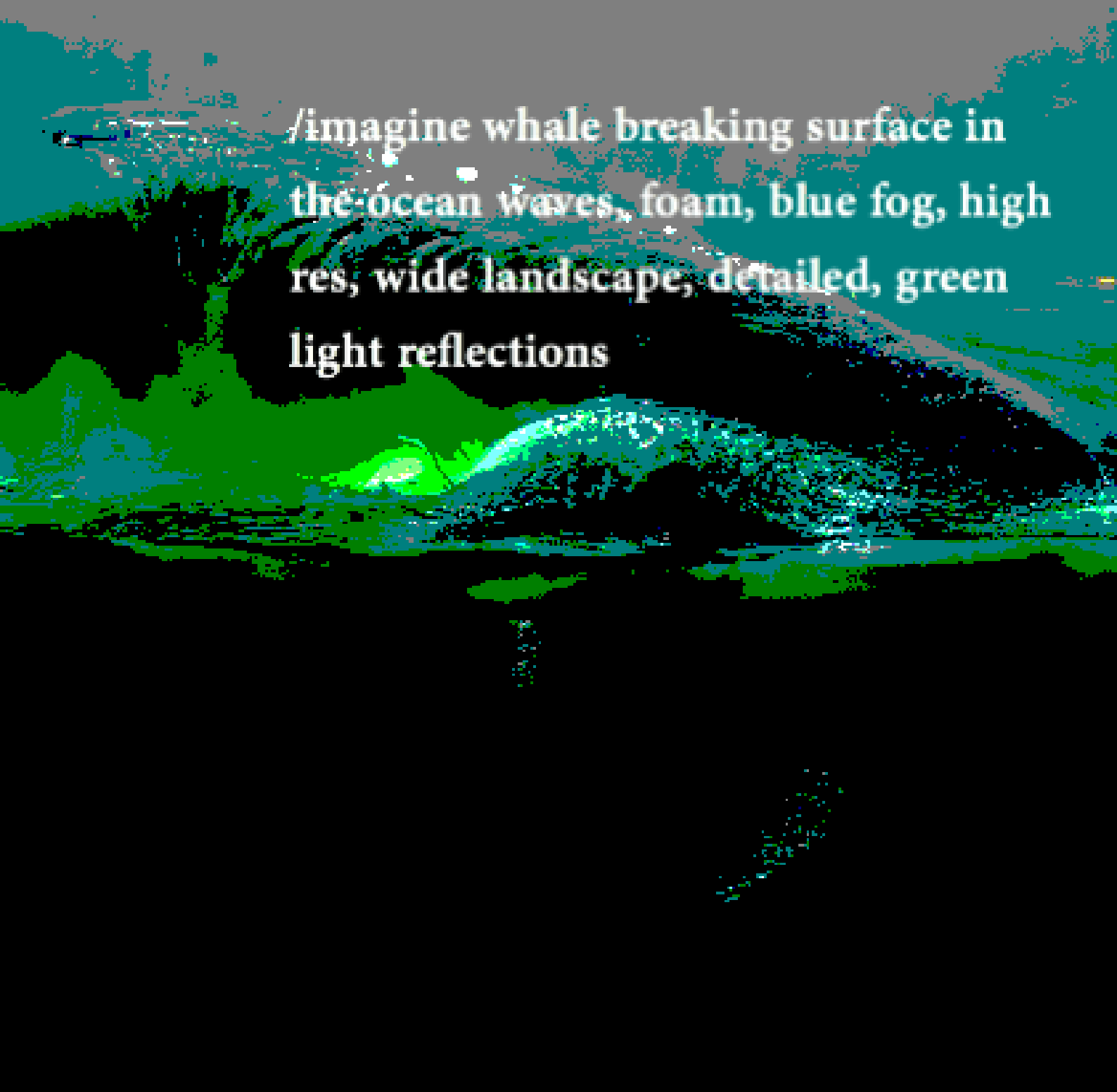
/ imagine



In a way talking to the model generating images from ~~text~~ makes me remember how I was learning to draw. There are certain things that we draw from our memory only by looking many times at that object, for example a nose. Yet it does not mean that we can draw a nose in the most accurate way. More often we draw how we perceive, not how we want to be perceived by others. It is not straightforward that the most efficient way to suggest a nose is by drawing only two points where the nose drills are, leaving out any lines. It felt similar with the process of negotiating the image generation - the model draws based on the understanding of what it saw and not based on the desire to make me understand what it draws.



/imagine whale breaking surface in
the ocean waves, foam, blue fog, high
res, wide landscape, detailed, green
light reflections





I was excited

But I must remain vigilant

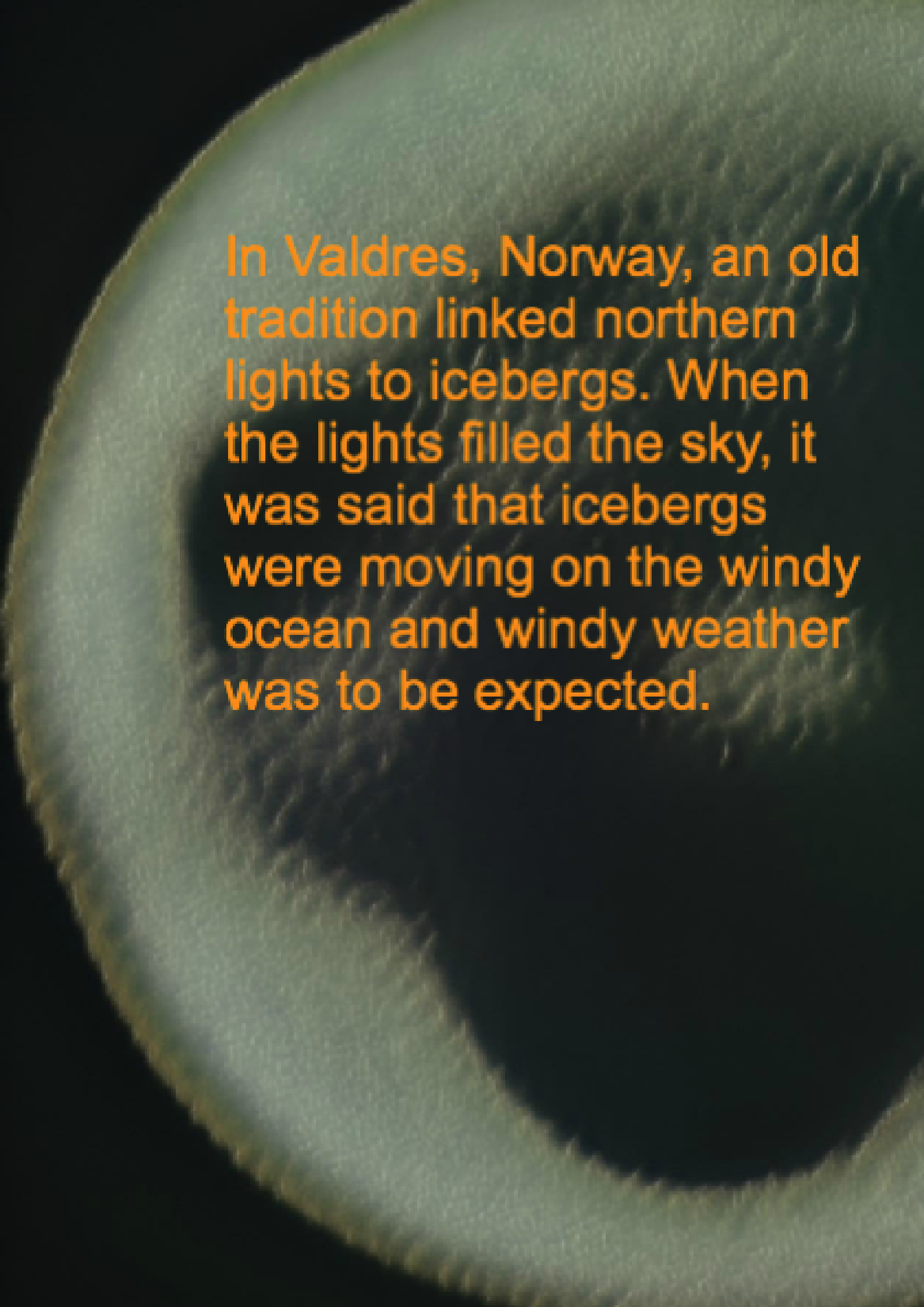
/imagine small fox made of light
and fog and fire leaves many light
trails in the snow at night,
landscape, eerie mood, highly
detailed, neon highlights, forest







In Finland people named the aurora revontulet (fire fox). The tradition behind this naming is that the northern lights are caused by a fox with glittering fur running across the mountain area in Sápmi



In Valdres, Norway, an old tradition linked northern lights to icebergs. When the lights filled the sky, it was said that icebergs were moving on the windy ocean and windy weather was to be expected.

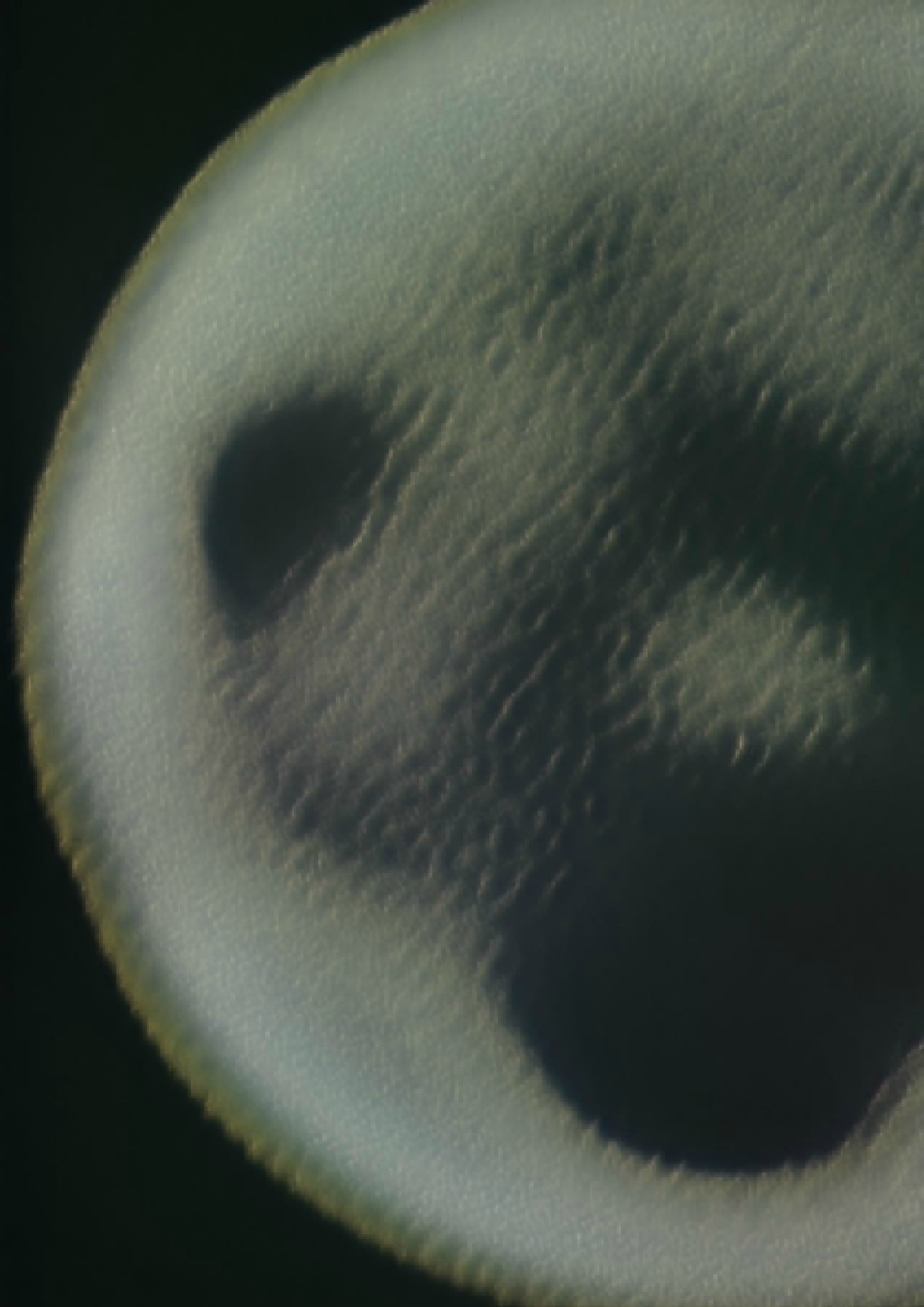
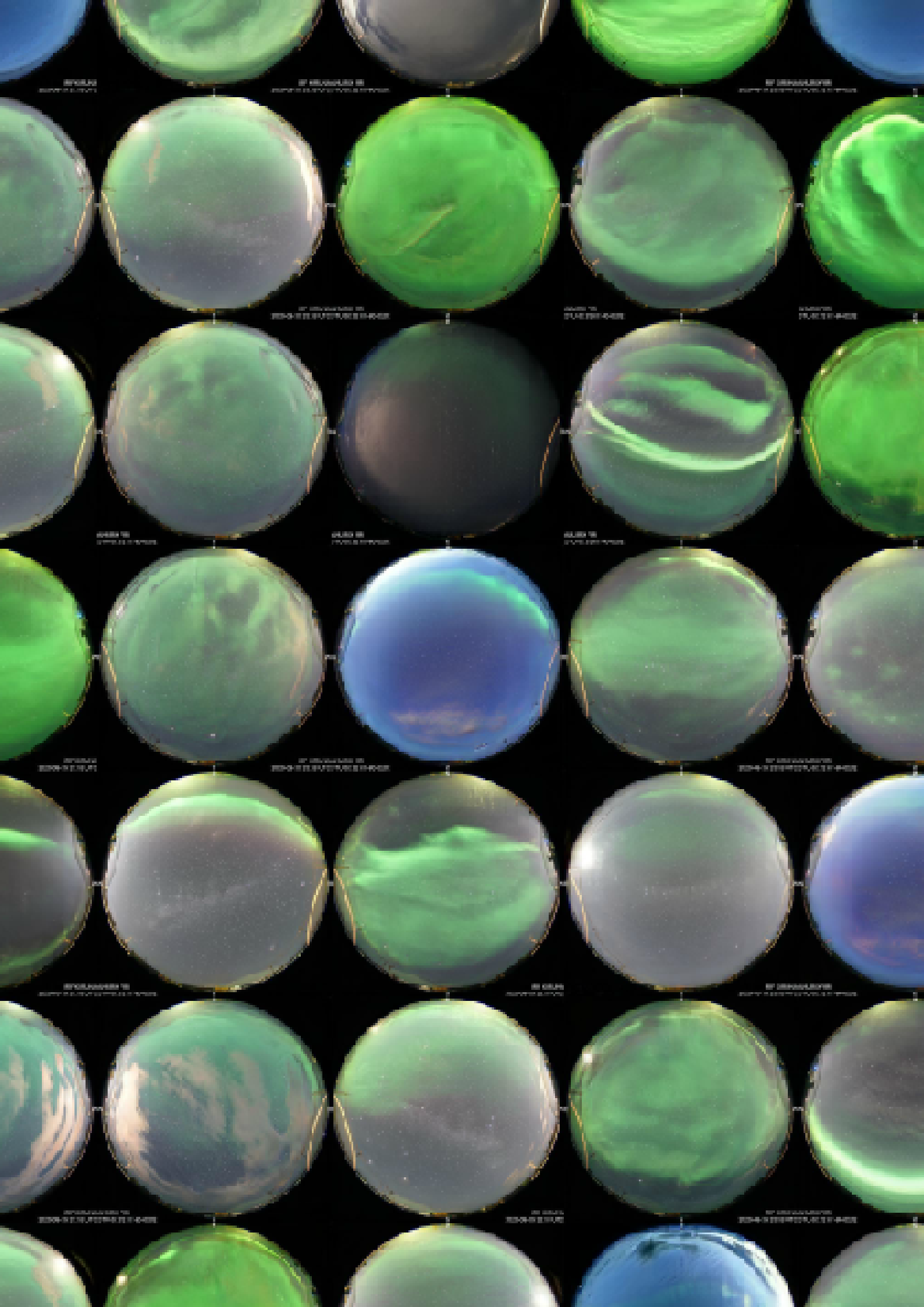


Fig. 1.1. This is the first known drawing of the northern light from Finnmark, showing Lapps hunting for fox illuminated by the northern light. The drawing was published in the book *Beskrivelse over Finnmarkens Lapper* (A description of the Lapps of Finnmark) by K. Leem from 1767. In the original text the author says: "in that part of the country the northern light is so strong on clear nights that it appears as if the heaven is on fire"





OPAL
SAMPLE 1

OPAL
SAMPLE 2

OPAL
SAMPLE 3

OPAL
SAMPLE 4

OPAL
SAMPLE 5

OPAL
SAMPLE 6

OPAL
SAMPLE 7

OPAL
SAMPLE 8

OPAL
SAMPLE 9

OPAL
SAMPLE 10

OPAL
SAMPLE 11

OPAL
SAMPLE 12

OPAL
SAMPLE 13

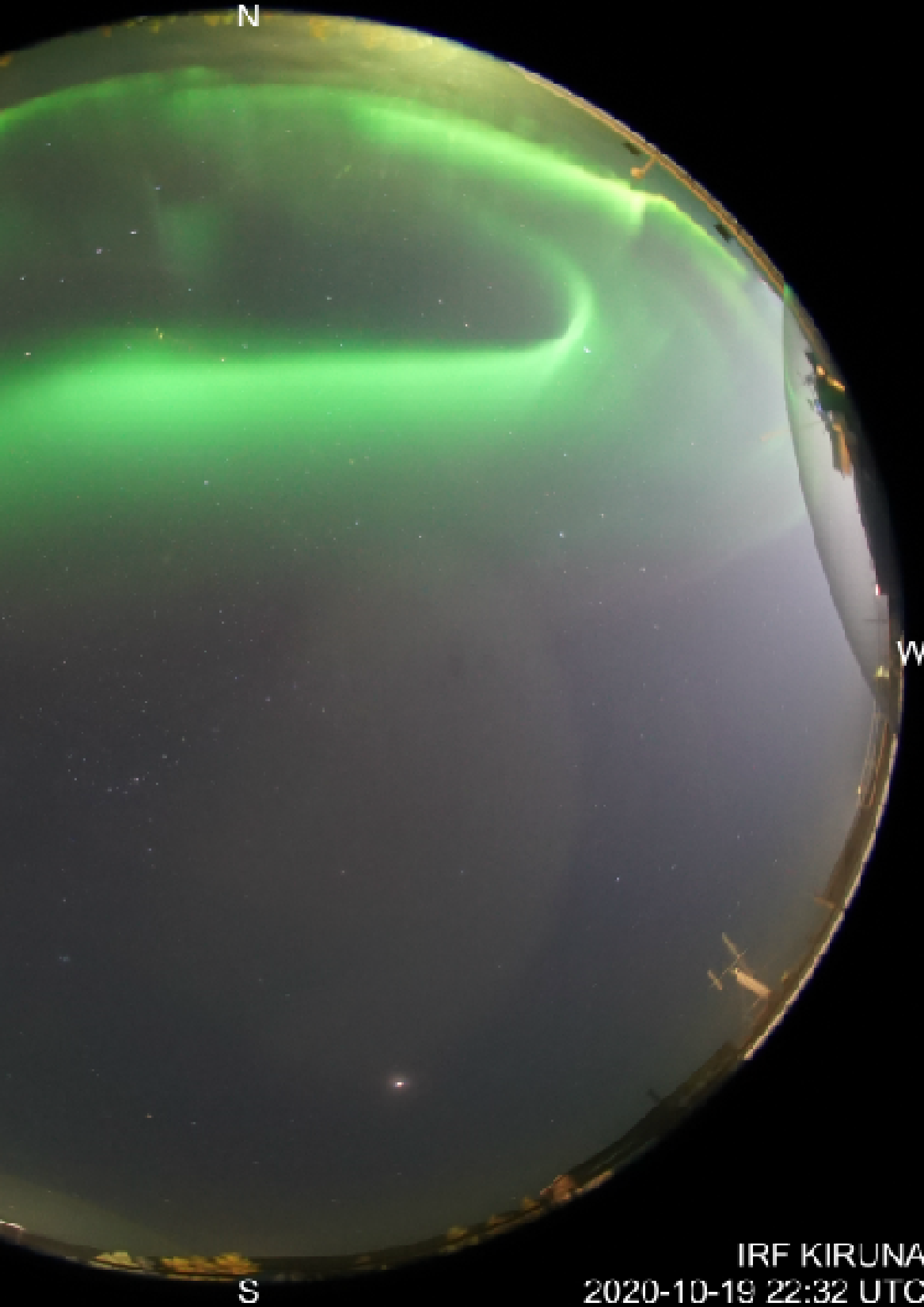
OPAL
SAMPLE 14

OPAL
SAMPLE 15

OPAL
SAMPLE 16

OPAL
SAMPLE 17

OPAL
SAMPLE 18



N

S

IRF KIRUNA
2020-10-19 22:32 UTC

crie

mesaje primite

70

umânate

importante

rimise

mesaje nefinalizate

7

Categorii

mai multe

te

+

map]/Outbox

related items

Modernism

127

otes

Readings

234

aatchi



Subject: Request to provide access

2022-06-21 14:20

From: Urban Braendstroem

To: Marius Echim

Dear Marius!

You can find all data here: <https://www.irf.se/>

I would recommend starting with fall 2020 and

Here:

The unprocessed raw files (raw directory) might be useful for training.

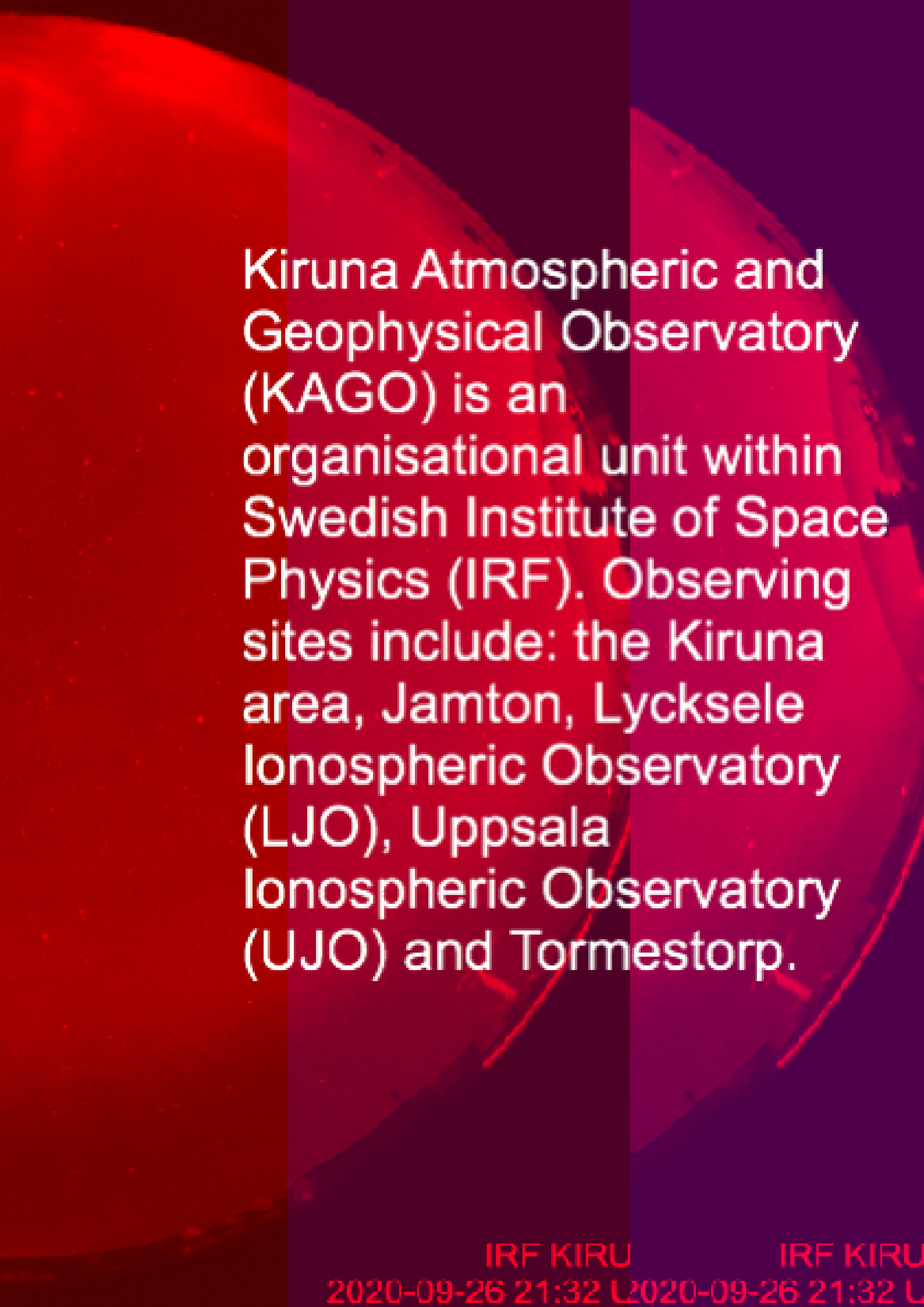
use a tool such as wget to download multiple

Data licence here:

Very interested to hear about your results. Please

On vacation now, therefore short response, sorry

All the best and have a nice summer!



Kiruna Atmospheric and Geophysical Observatory (KAGO) is an organisational unit within Swedish Institute of Space Physics (IRF). Observing sites include: the Kiruna area, Jamton, Lycksele Ionospheric Observatory (LJO), Uppsala Ionospheric Observatory (UJO) and Tormestorp.

